

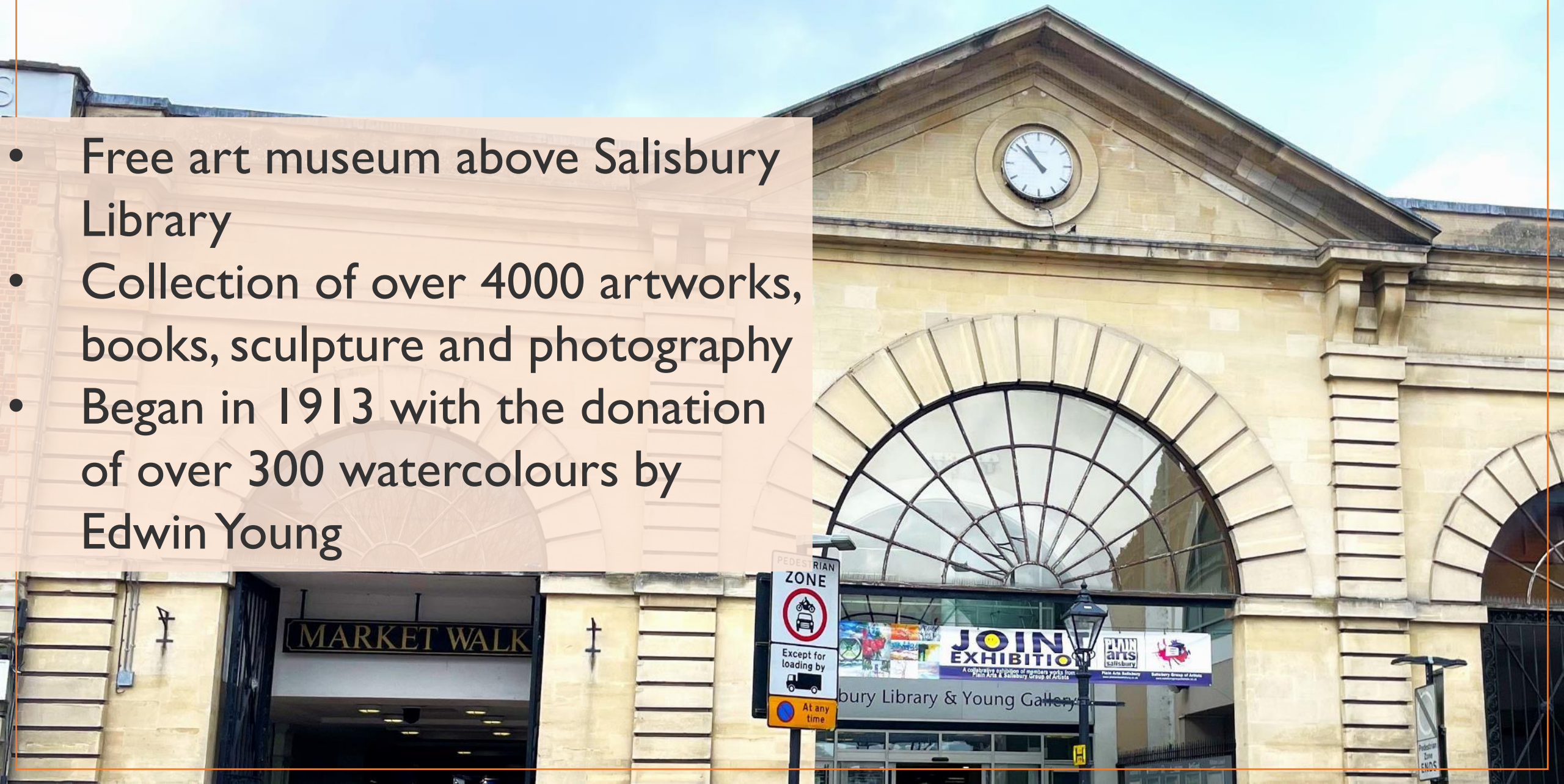
A watercolour painting of a Gothic cathedral, likely a church or abbey, with a prominent spire. The scene is framed by bare, dark trees in the foreground, suggesting a late autumn or winter setting. The painting style is soft and atmospheric, with muted colors and visible brushstrokes. The text is overlaid on a semi-transparent white rectangular area in the center of the image.

The Close Recorded: Watercolours from the Edwin Young Collection

Dr Emily Dunbar
YoungGallery

The Young Gallery

- Free art museum above Salisbury Library
- Collection of over 4000 artworks, books, sculpture and photography
- Began in 1913 with the donation of over 300 watercolours by Edwin Young



Edwin Young

- Edwin Young 1831-1913
- Born in Salisbury, son of a shoemaker.
- Lived in multiple addresses around the city.
- Worked as a teacher, land agent and surveyor's clerk, and an accountant.
- 1901 census described him as a 'landscape artist'.

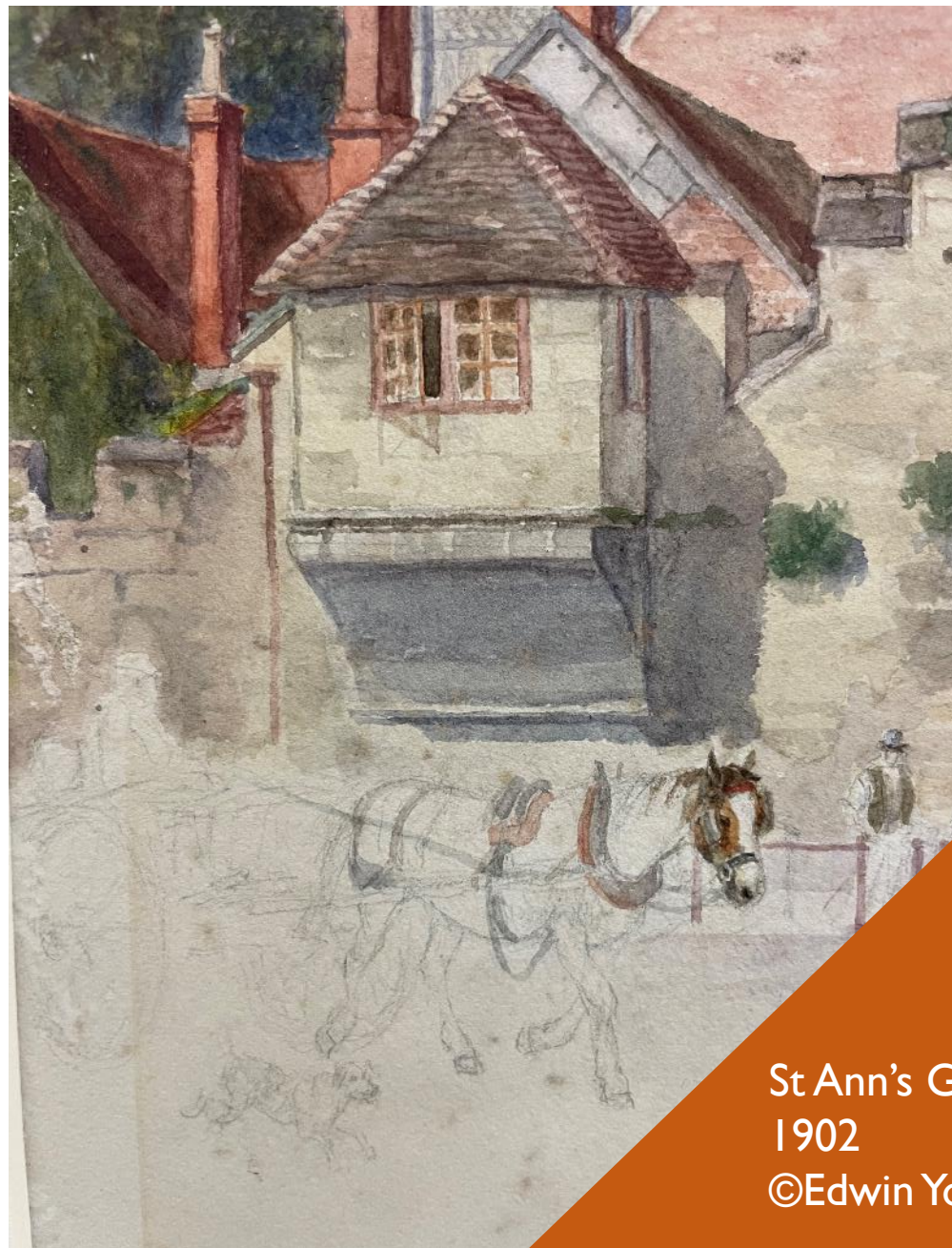
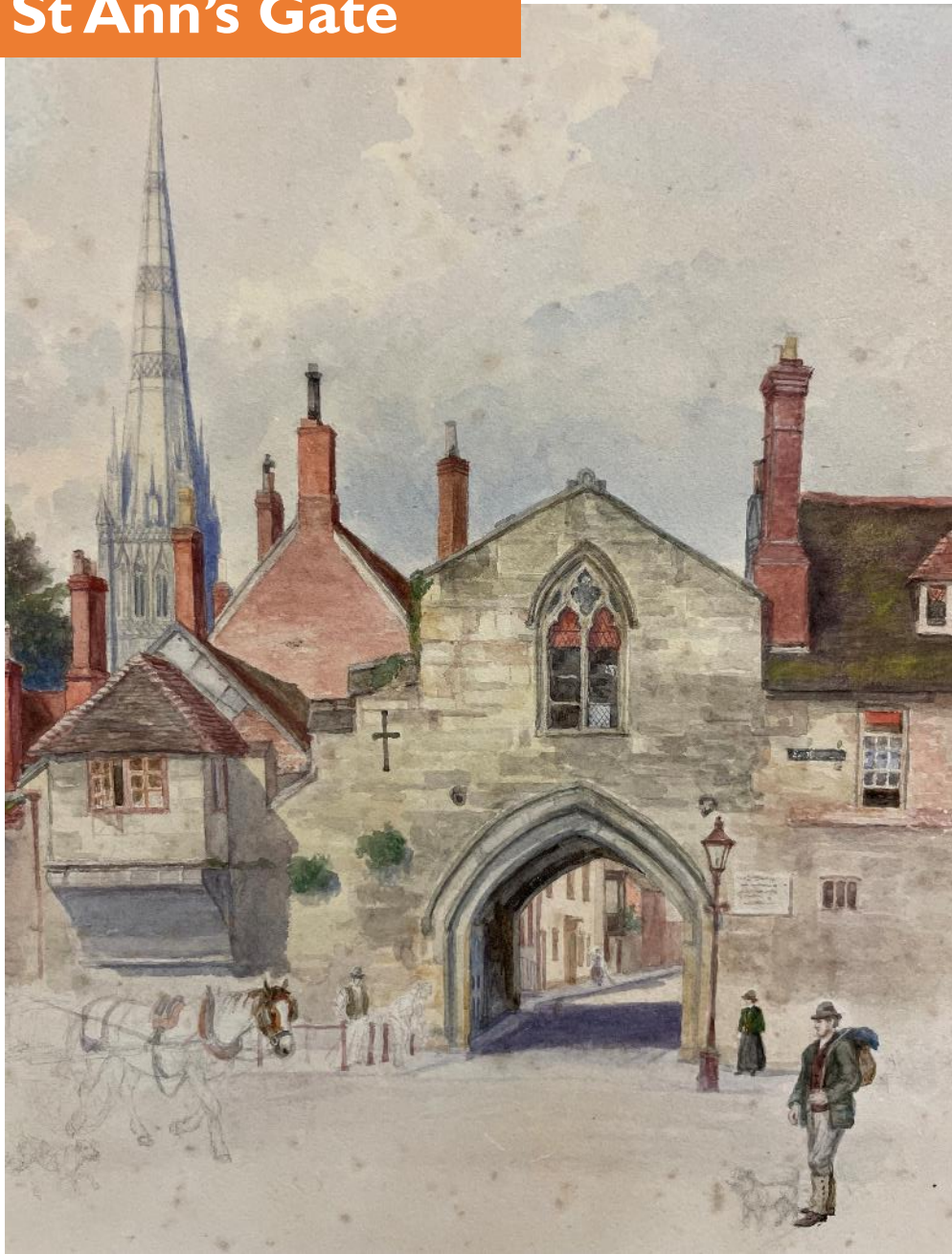


Edwin Young



Watercolour presumed to be a self-portrait, and a photograph presumed to show Young in fancy dress
©Edwin Young Collection

St Ann's Gate

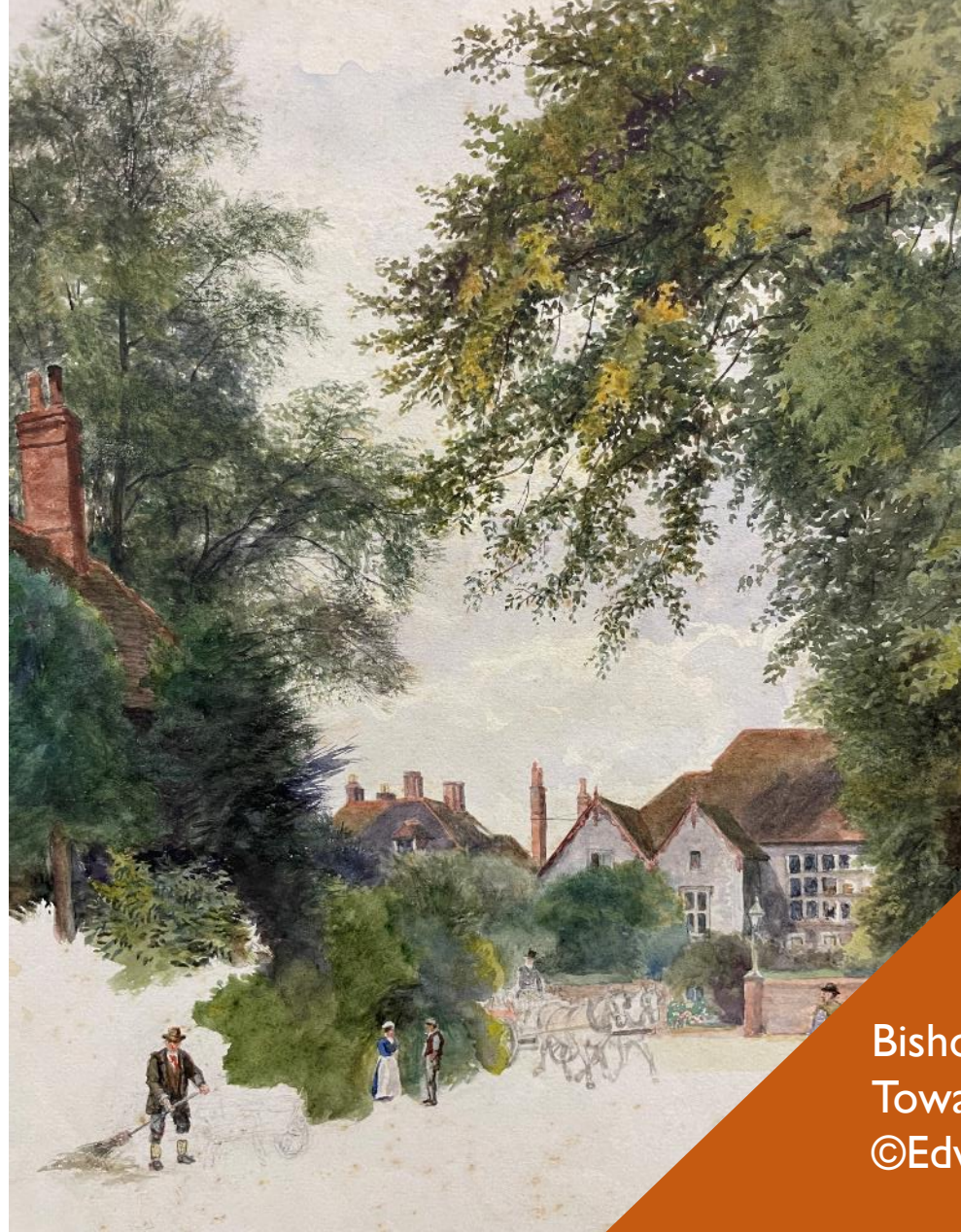


St Ann's Gate, unfinished,
1902
©Edwin Young Collection

Bishop's Walk

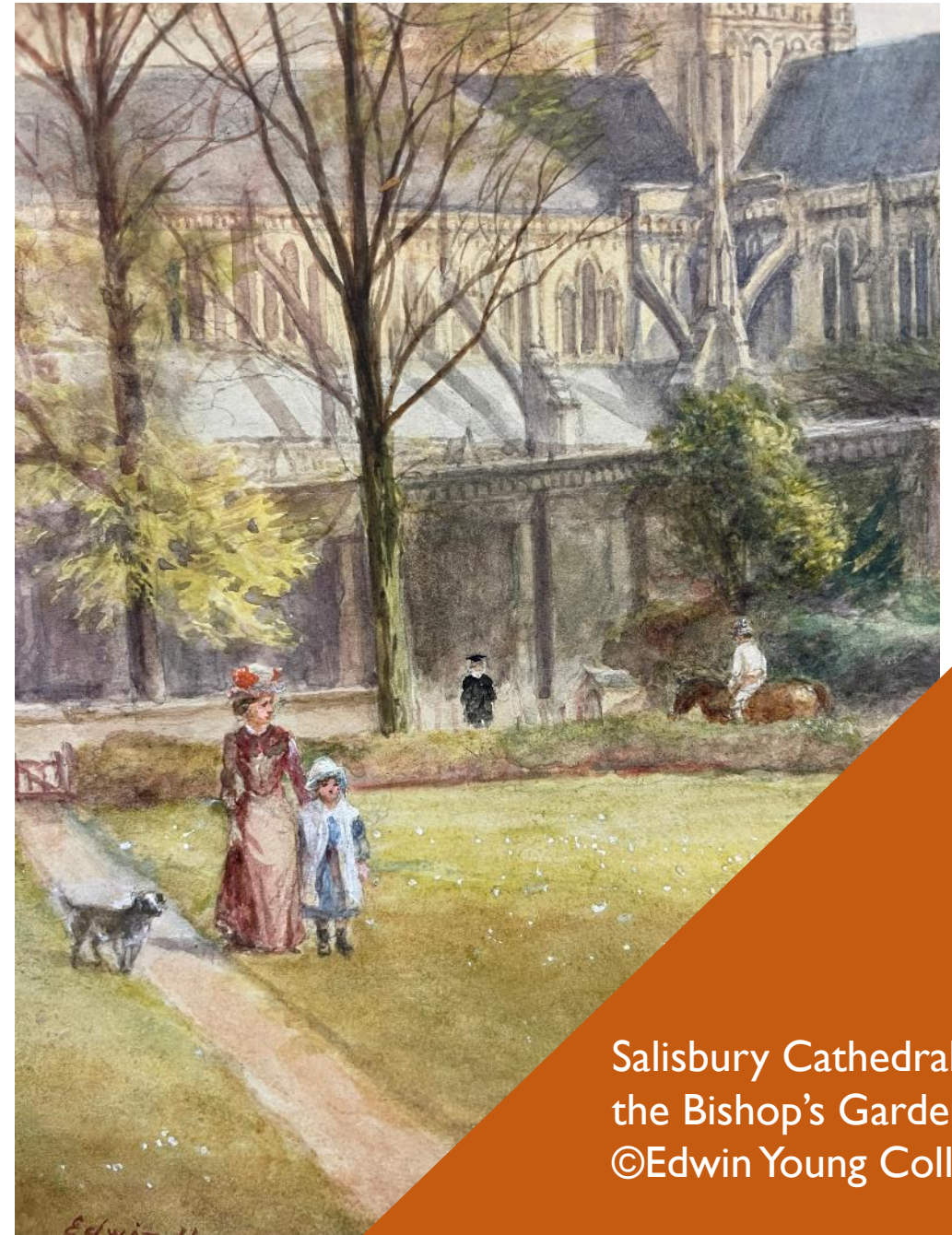


View towards the Wardrobe



Bishop's Walk and View
Towards the Wardrobe
©Edwin Young Collection

Bishop's Garden



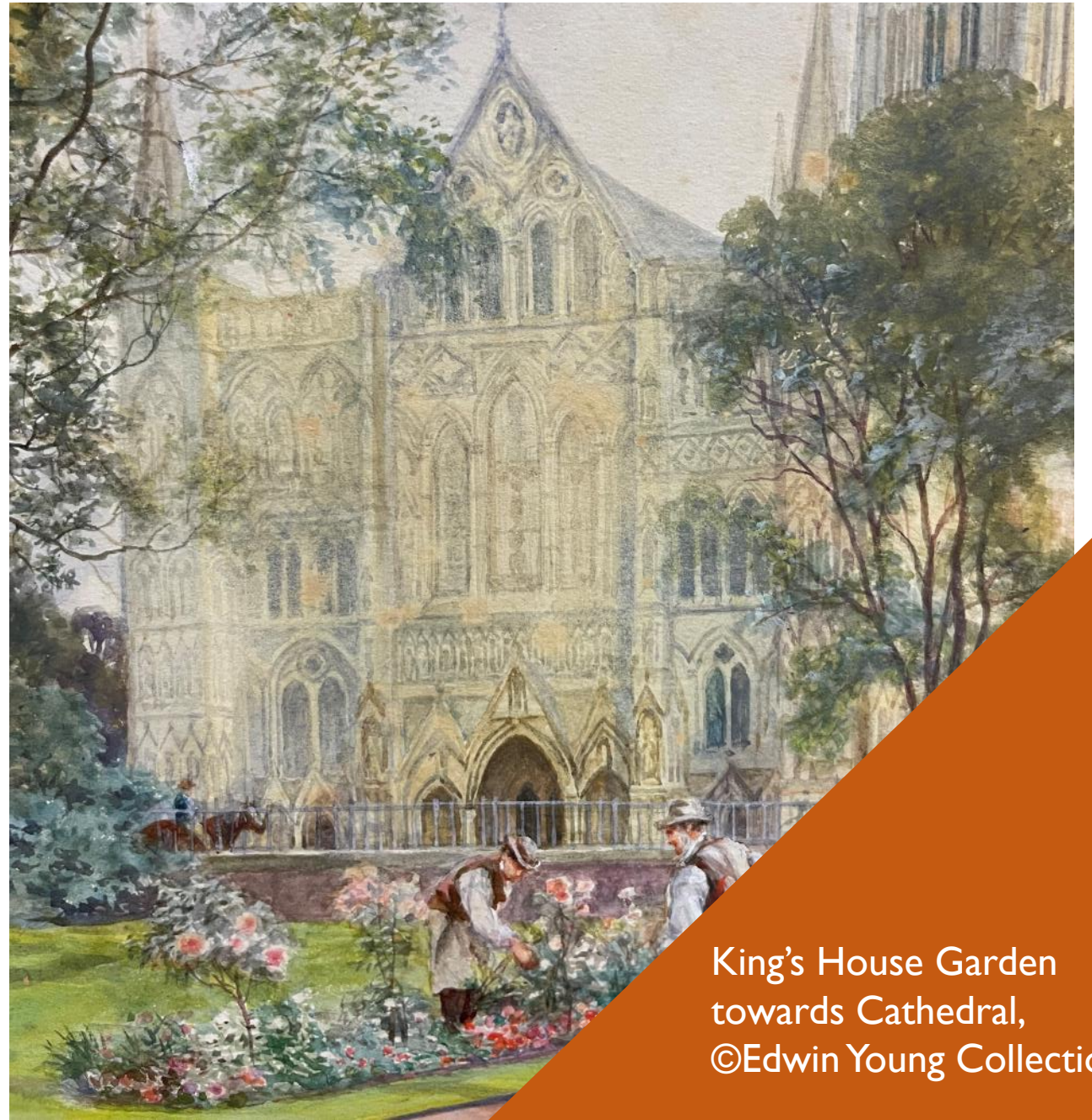
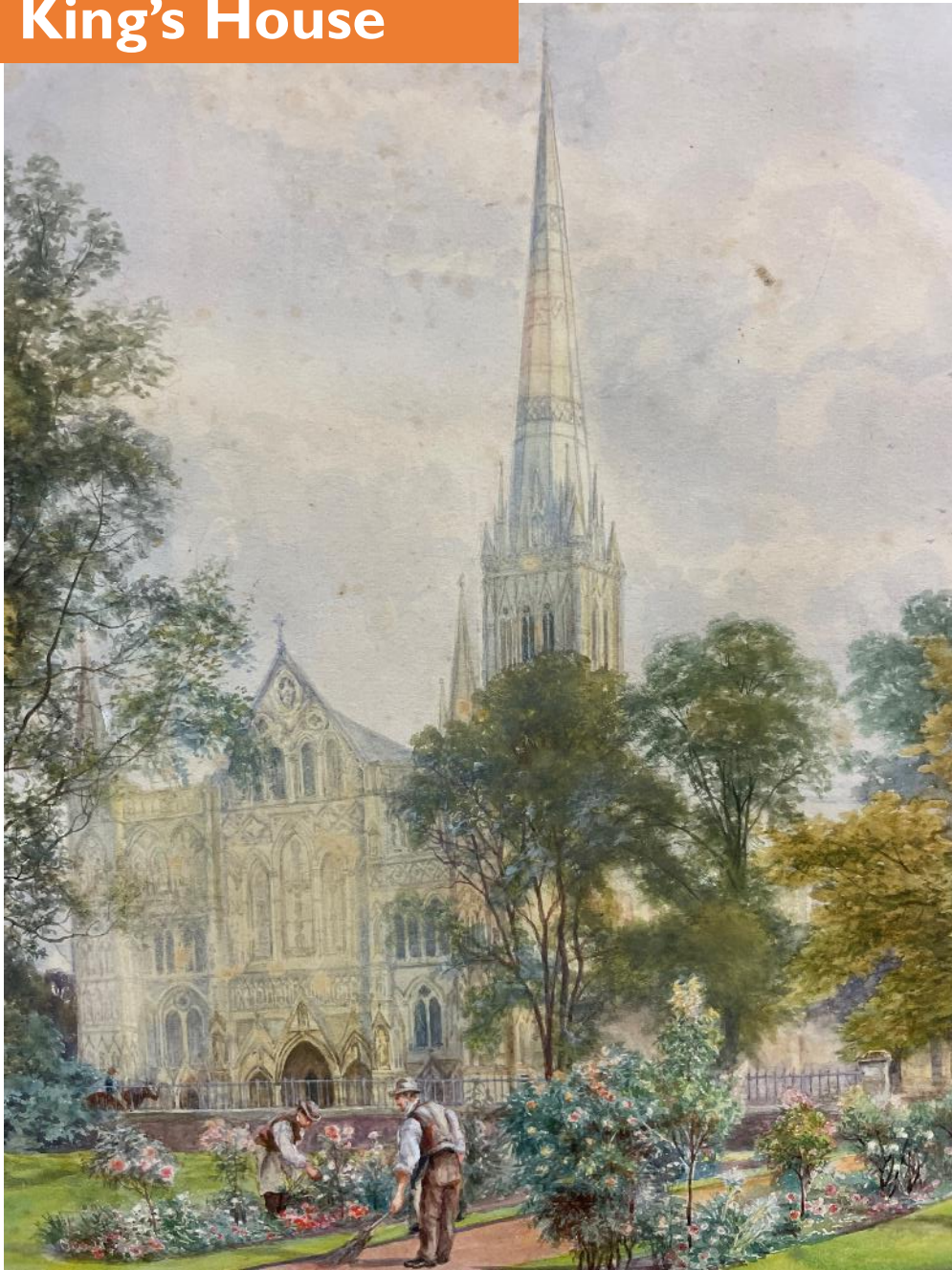
Salisbury Cathedral from
the Bishop's Garden
©Edwin Young Collection

King's House



King's House Garden,
unfinished
©Edwin Young Collection

King's House



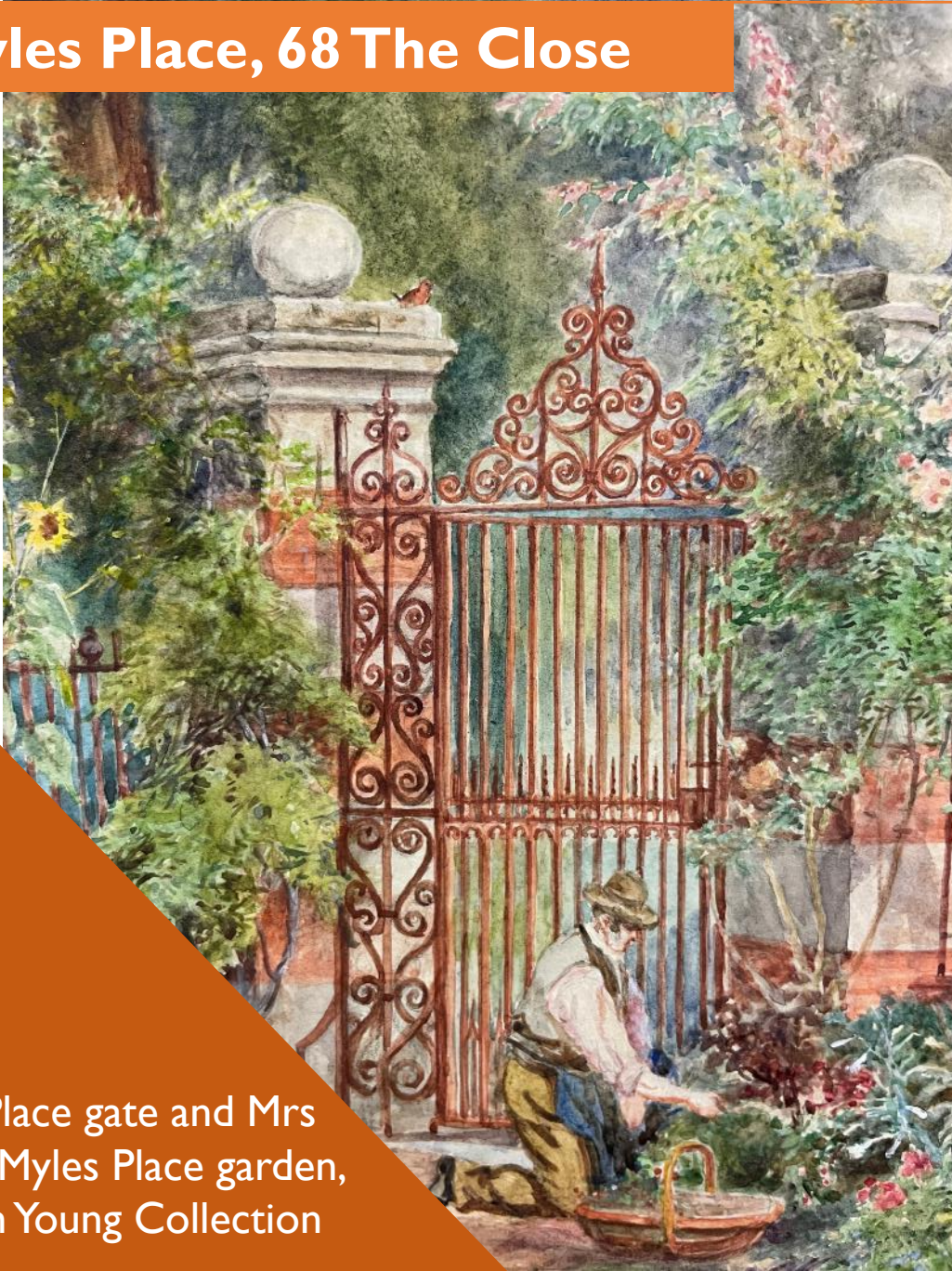
King's House Garden
towards Cathedral,
©Edwin Young Collection

Kitchen Garden



The Kitchen Garden
behind the Wardrobe,
unfinished
©Edwin Young Collection

Myles Place, 68 The Close



Myles Place gate and Mrs Jacob's Myles Place garden, ©Edwin Young Collection



The stables

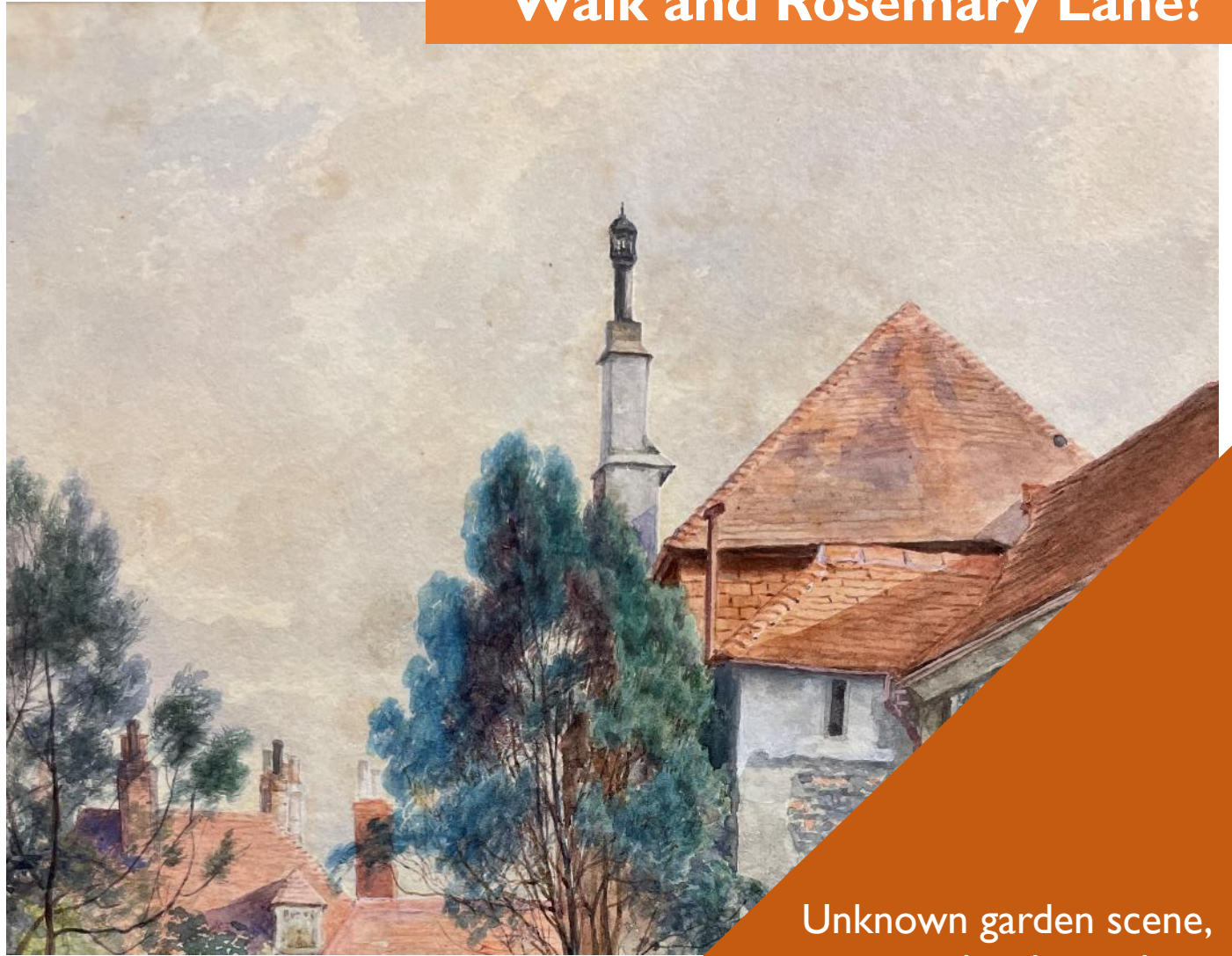


The stables in the Close,
©Edwin Young Collection

Unknown Garden in the Close

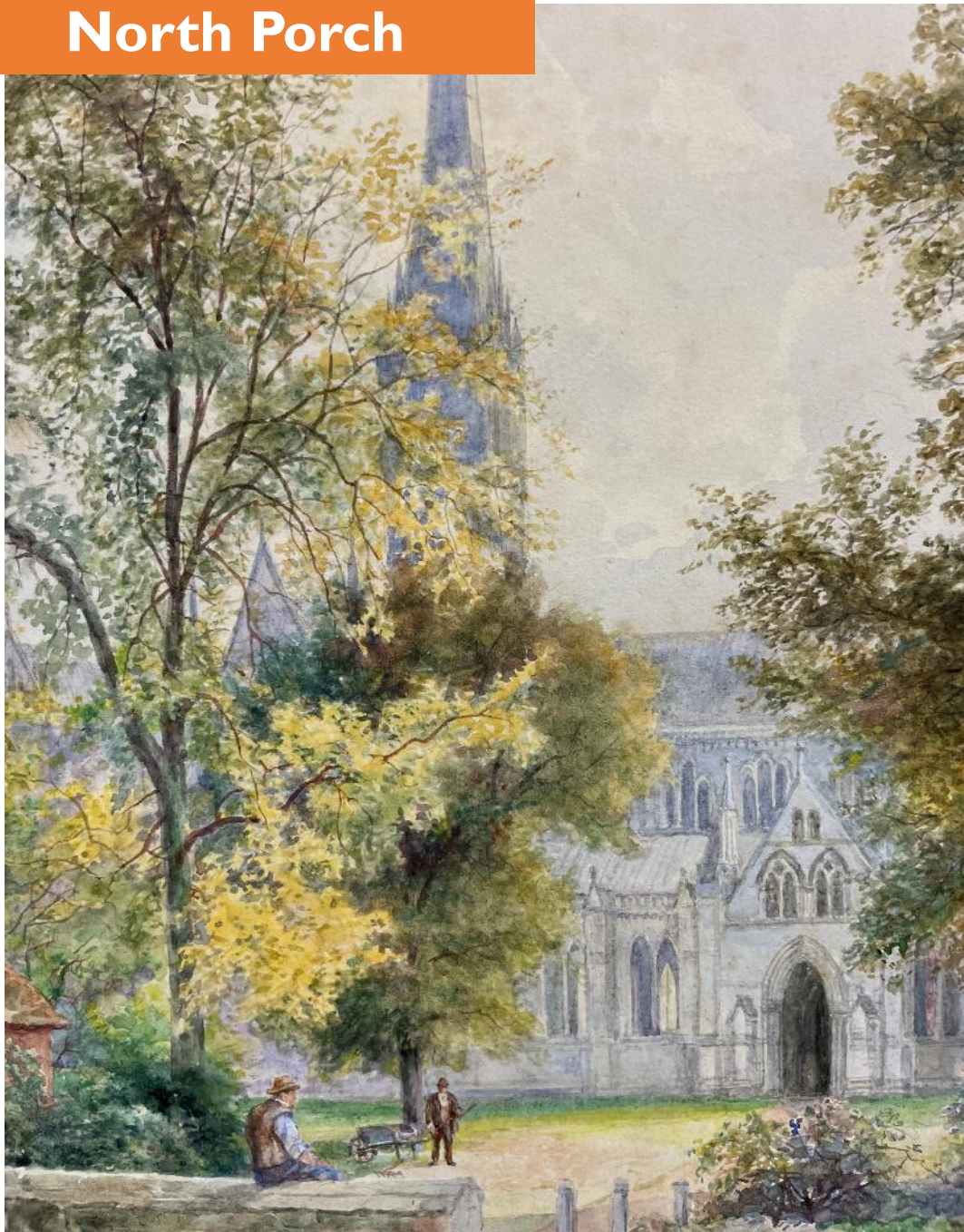


House on the corner of North Walk and Rosemary Lane?



Unknown garden scene,
presumed to be in the
Close,
©Edwin Young Collection

North Porch



The North Porch of
Salisbury Cathedral,
©Edwin Young Collection

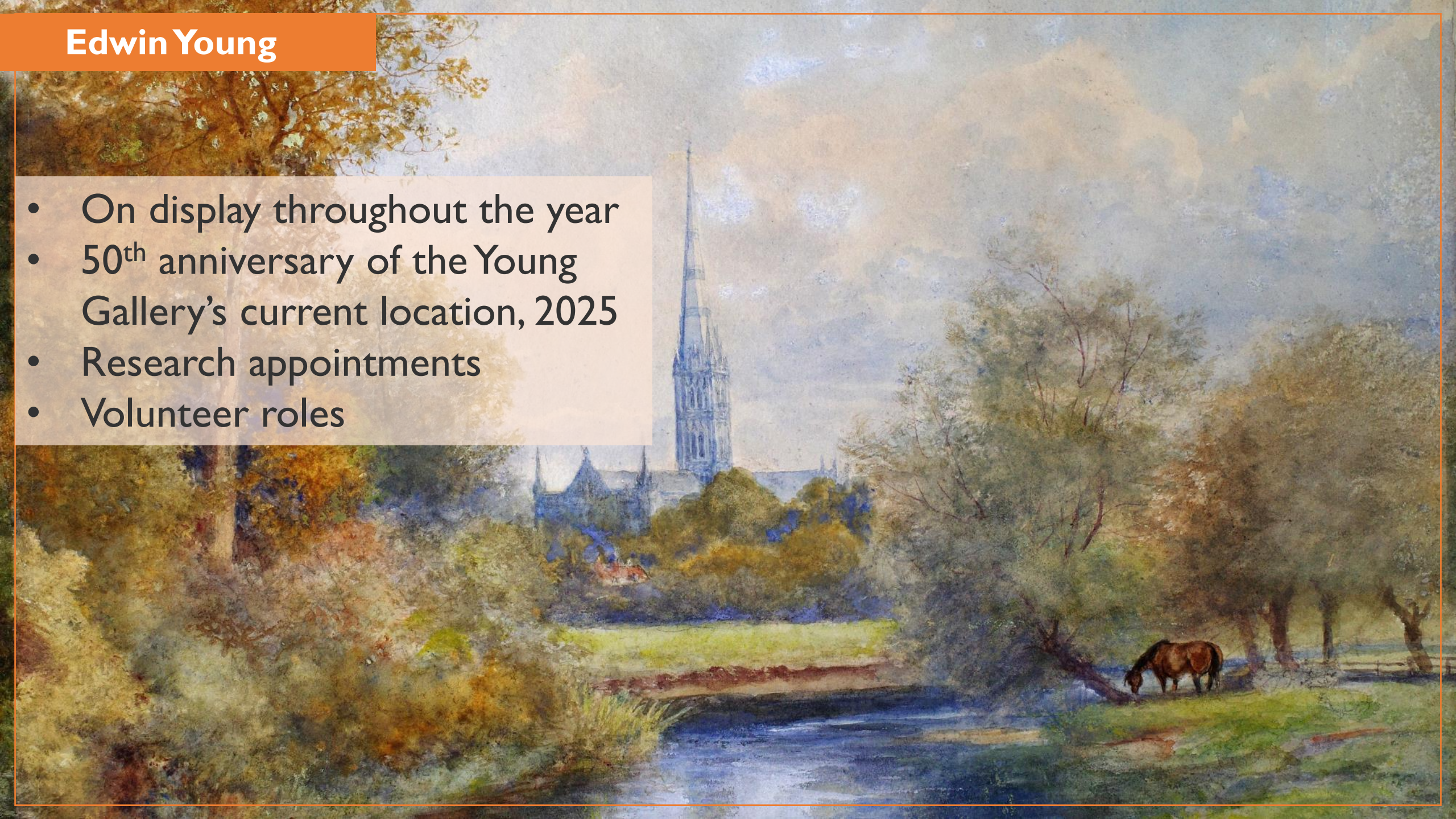
Edwin Young

- ‘A very clever picture... very creditable to the painter, who is only an amateur, and not a professional artist.’
- Wished to donate paintings and endowment to the people of Salisbury.
- Picture Gallery opened in 1913 on Chipper Lane.
- “This gallery was built A.D. 1913 and was presented by Edwin Young citizen of Salisbury to the mayor and corporation together with upwards of 300 original drawings by the donor of picturesque buildings and places of natural charm in the neighbourhood of Salisbury, to form the nucleus of an art collection and made free to the city by the accompanying endowment.”



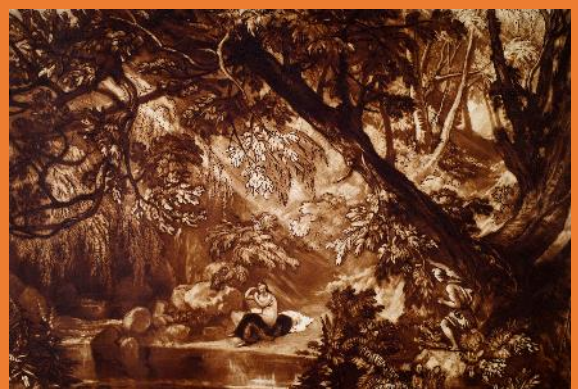
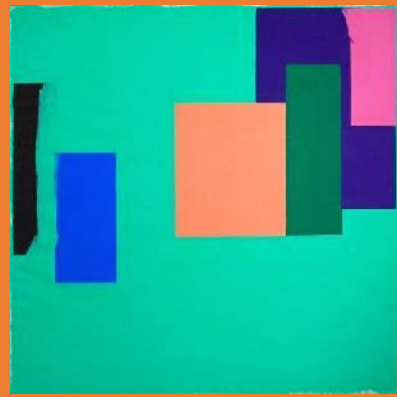
Edwin Young

- On display throughout the year
- 50th anniversary of the Young Gallery's current location, 2025
- Research appointments
- Volunteer roles



The Young Gallery

- Over 4000 artworks
- Rebranding
- Full exhibition programme launching October 2024
- Find out more at <https://younggallerysalisbury.co.uk>



A watercolor illustration of a Gothic cathedral, likely a church or university building, with a prominent tall spire. The scene is viewed through the bare, dark branches of trees in the foreground, suggesting a late autumn or winter setting. The overall style is soft and painterly, with muted colors and visible brushstrokes.

Thank you for listening

Any questions?